



EVERYTHING YOU NEED TO KNOW!

Page 1:	Basics
Page 2:	Infrastructure + Sound
Page 3:	Light
Page 4:	Pyro - Confetti - FX
Page 5:	Plan Venue
Page 6:	Getting There
Page 7:	Bus & Truck
Page 8:	What should I do

Give this document to the tourmanager or to the busdriver (whoever is the wiser guy)!

basics

venue and office:

kaminwerk
kulturzentrum memmingen e.V.
anschützstraße 1
87700 Memmingen

floorspace:

400 qm

audience:

800 standing | 400 seated

stage:

width: 10 m | depth: 7 M | height: 1 M | clearance 6 m

loading:

5 m no steps (so we really don't need an army of hands)

power:

3 x 200A TN-s

parking:

behind venue (look at the map at page 4)

Buspower:

230v@16A, 400v@16A, 400V@32A

wardrobe 1:

20 qm with toilette and shower - 1st floor

wardrobe 2:

20 qm with toilette and shower - 1st floor

wardrobe 3 (Single):

7 qm with toilette and shower - 1st floor

catering:

60 qm - 1st floor

internet:

wifi - password changes every century

contact:

office

+49 8331 991199

fax

+49 8331 991198

booking

matthias resseller

+49 8331 991196

matthias.resseller@kaminwerk.de

eva castro

+49 8331 991199

eva.castro@kaminwerk.de

sound-light

Tobias Kofler

+49 170 4985891

tobias.kofler@kaminwerk.de

important:

Two hands are enough. We have no stairs and extremely short paths to the stage.

Cases or flight cases weighing more than 40 kilos cannot be carried by our crew to the dressing room and catering area. Please note: there is a staircase and no elevator.

The earliest load-in is at 13:00. If an earlier load-in is required, the additional costs must be covered by the production.

It's not possible to hang any lamps in our rig. No lights are allowed to be mounted on the house lights.

Infrastructure

Cores FOH – Stage:

- 4x CAT-Core Klotz
- 2x CAT-Trommel
- 2x 16A Power (Lights/Audio)

Riser:

A total of 8 risers available in heights of 0.6 / 0.8 / 1.0 m.
Risers used for FOH are included in this total.

SOUND

P.A.:

- 4x d&b Audiotechnik Q1 Linearray (per Side)
- 6x d&b Audiotechnik Q-Sub (CSA)
- 2x d&b Audiotechnik J-Sub
- 2x d&b Audiotechnik Q7 Nearfill

Monitoring:

- 8x d&b Audiotechnik M4
- 3x d&b Audiotechnik Q-Sub/Q7 (Sidefill or Drumfill)
- 2x d&b Audiotechnik D20 (8 Amp-Channels)
- 1x d&b Audiotechnik D12 (2 Amp-Channels)

Consoles & Stageboxes:

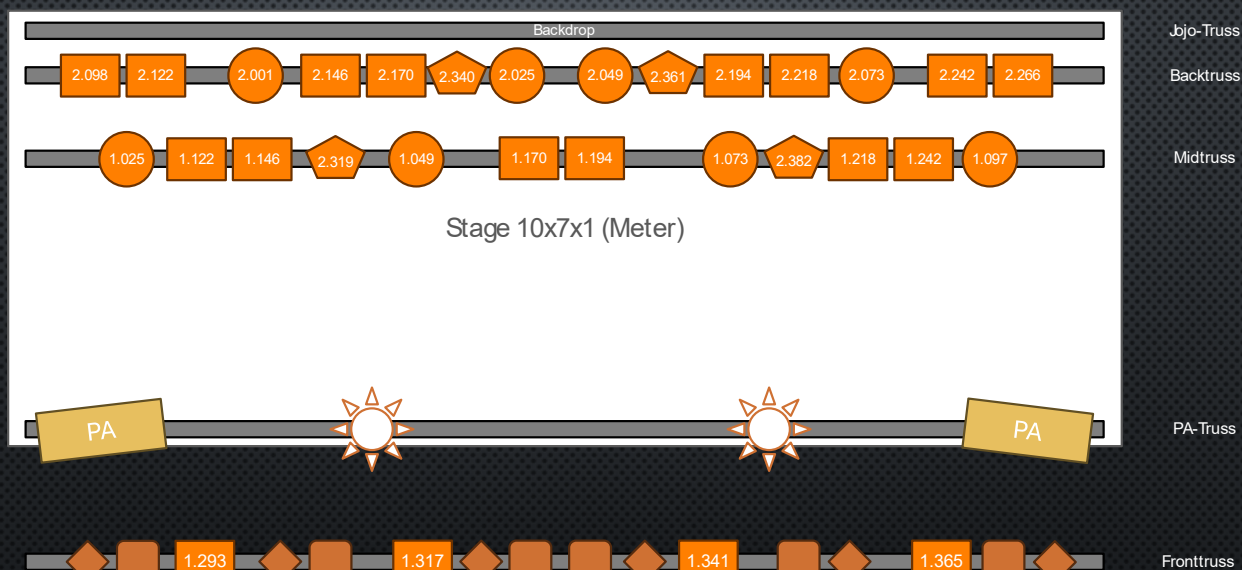
- 1x Midas HD96
- 1x Midas ProX (+Neutron)
- 2x Midas DL231
- 1x behringer WING compact

Mic's/DI:

- 2x Klark Stereo DI
- 6x LD-Systems DI-Box
- 8x SM57/58
- 8x AKG c391
- 2x Shure beta52
- 2x Shure beta91
- 5x Sennheiser e604

Stuff:

- Plenty of XLR-Cables
- 4x Klotz StraightLink LK37 Subcores
- 20x K&M Microphone Stand tall
- 15 K&M Microphone Stand short



DMX	Name
1.001	Profile
1.002	Profile
1.003	Profile
1.004	Profile
1.005	Profile
1.006	Profile

DMX	Name
1.013	Blinder 1
1.014	Blinder 2
1.015	Blinder 3
1.016	Blinder 4
1.017	ACL 1
1.018	ACL 2

DMX	Name
1.007	Arri 1 kW
1.008	Arri 1 kW
1.009	Arri 1 kW
1.010	Arri 1 kW
1.011	Arri 1 kW
1.012	Arri 1 kW

DMX	Name
1.019-1.024	House lights
...	
2.500	Haze
2.501	Fan
2.502	Fog



PYRO

Pyrotechnics are possible at Kaminwerk. However, we do not handle the official registration with the relevant authorities. This must be arranged by the artist or their team.

Pyrotechnics registration contact:

Ordnungsamt Memmingen
Ratzengraben 4b
87700 Memmingen, Germany
Phone: +49 8331 850321
Fax: +49 8331 850320
Email: ordnungsamt@memmingen.de
Website: www.memmingen.de

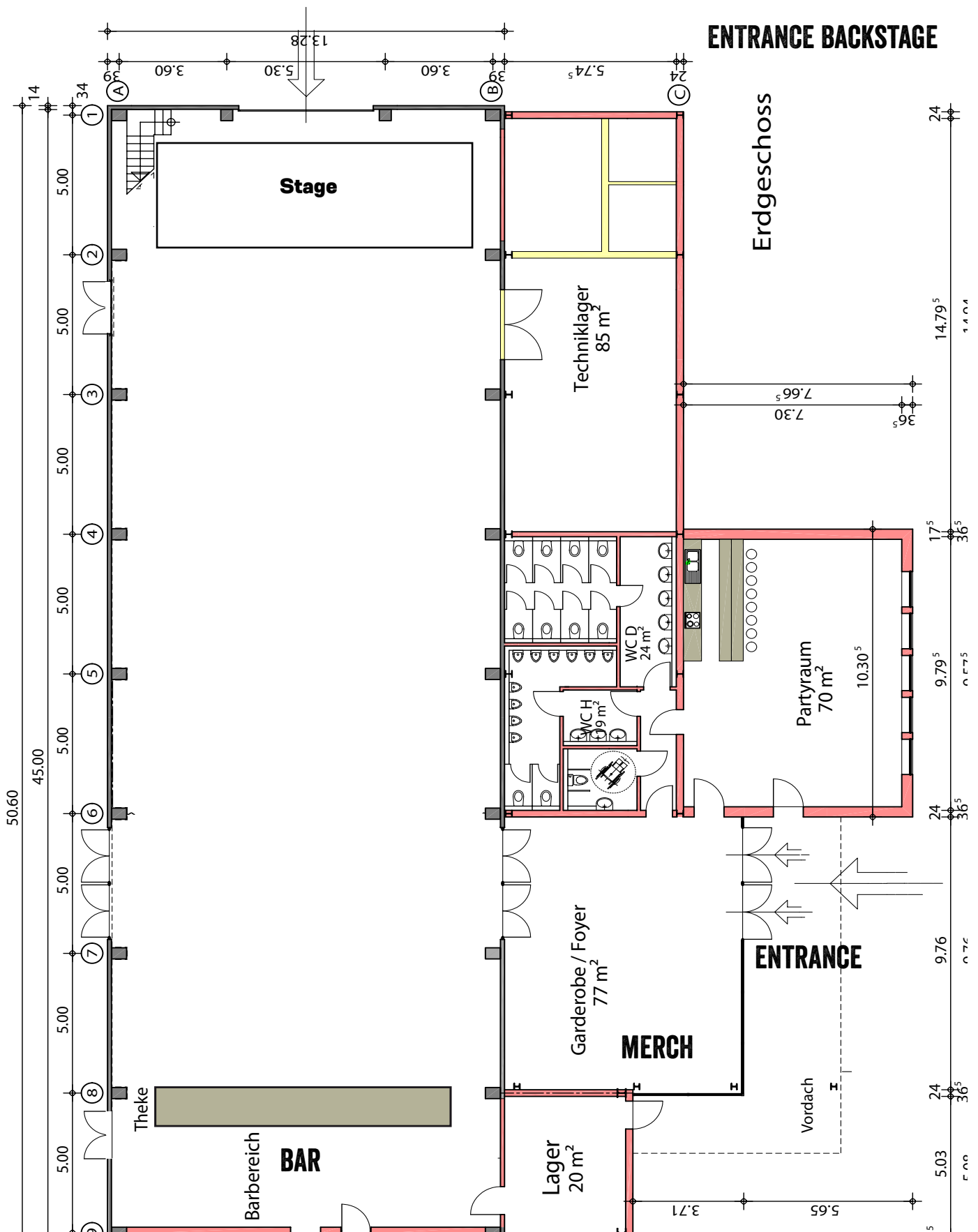
Confetti/Streamers

Please refrain from using confetti. Streamers are allowed. Just make sure not to damage the acoustic panels in the hall ceiling when firing them. If any damage occurs, you'll have to cover the costs.

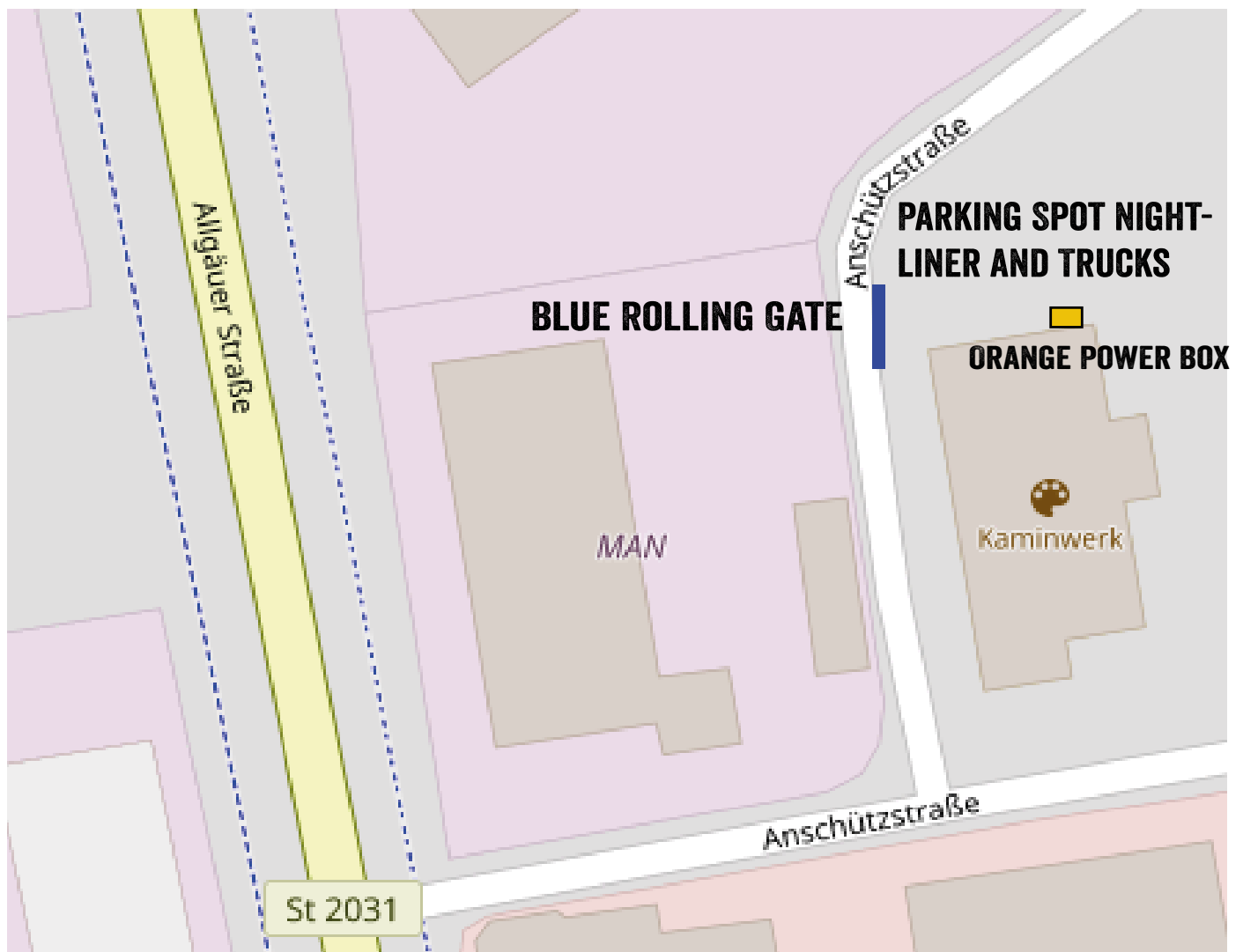
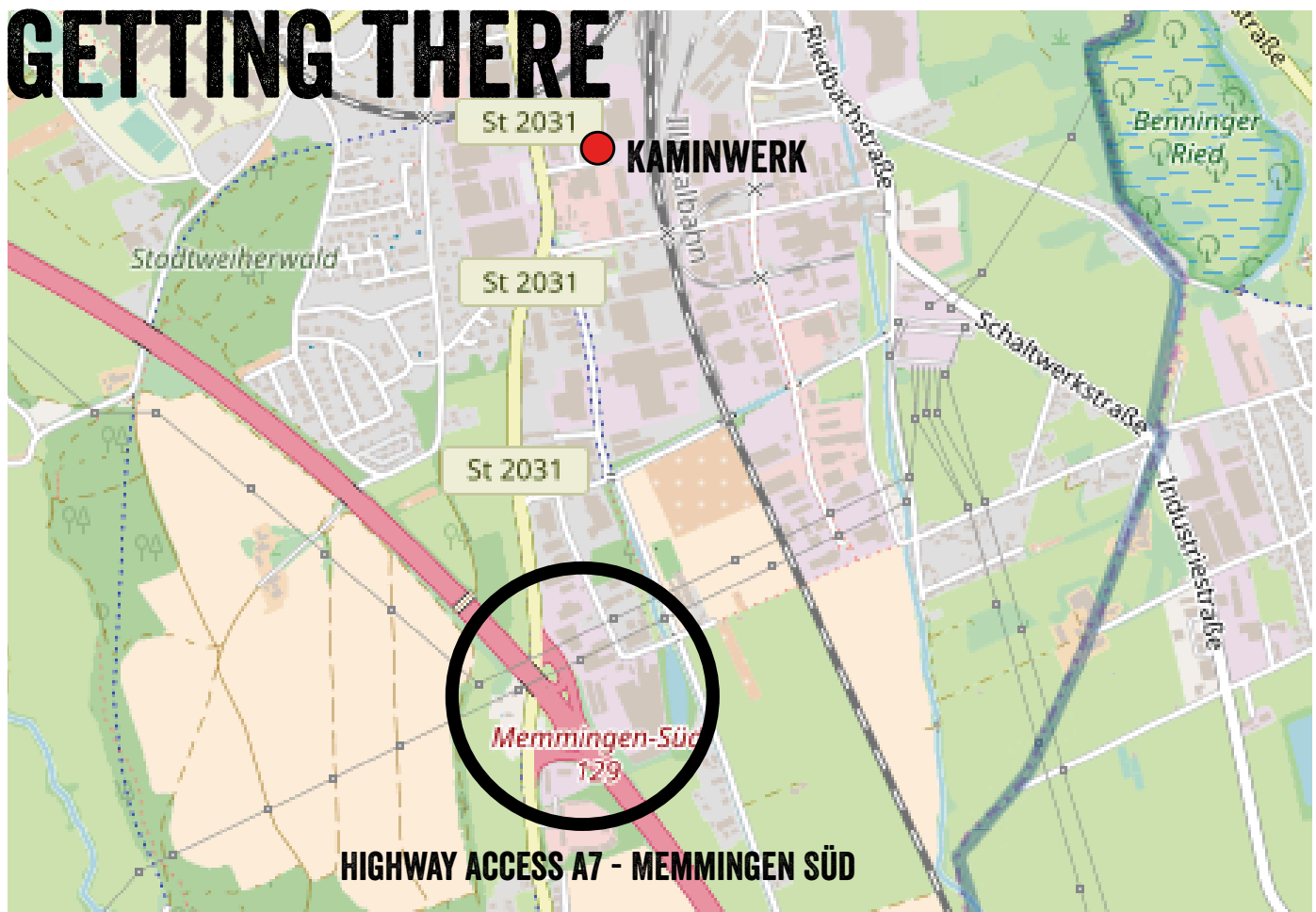
FX

We currently have four small vertical fog machines available. For a rental fee to be agreed upon, we're happy to provide them for your show.

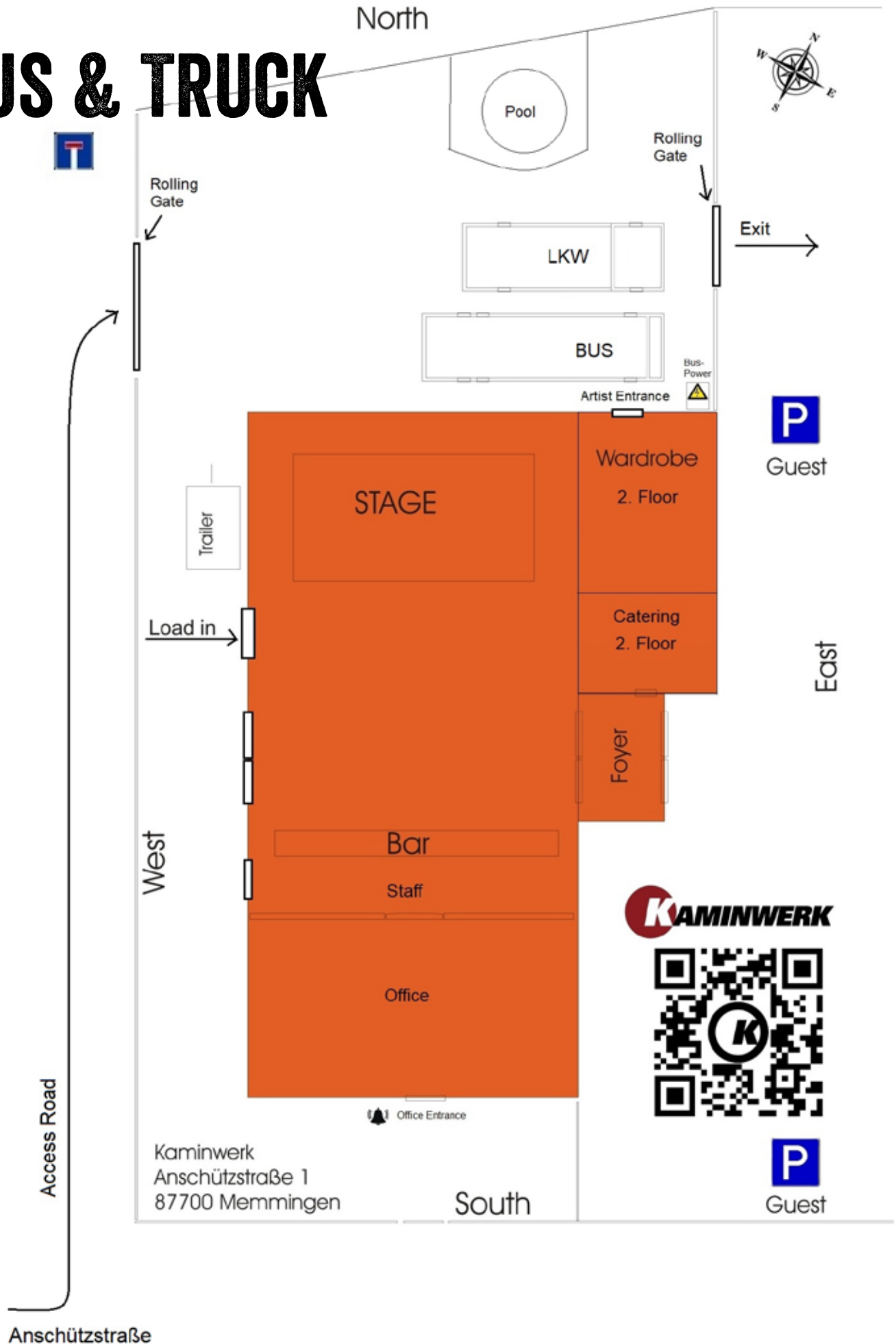
PLAN VENUE



GETTING THERE



BUS & TRUCK



What should I do?

Bored of staring at your tablet or scrolling your phone for the hundredth time?
Tour life driving you nuts?

Before you go berserk – take a moment and check out the surroundings of Kaminwerk!

Memmingen is a charming medieval town in the heart of Swabia. Discover the local museums, enjoy a relaxed shopping trip, or take a coffee break on the picturesque marketplace right in front of the historic town hall. The town center is just a 15-minute walk from the venue.

Fancy some fresh air? Only a few minutes from Kaminwerk you'll find peaceful forest trails, perfect for a short hike. Or if you're feeling sporty, the bouldering hall is just around the corner.

Still unsure what to do?

Just ask us – we're happy to help!

Don't be a grumpy roadie – there's plenty to explore around here!

